

Water Meter Installation Guide



TOOLS/SUPPLIES NEEDED


Pipe Cutter

Soldering supplies, compression fittings or PEX adapters (We recommend the Melnor Metal Double Female Adapter for Model TSN1)

Pipe wrench or channel locks

Teflon Tape/PTFE pipe sealant or rubber gaskets

 **INSTALLATION BY A LICENSED PLUMBER IS STRONGLY RECOMMENDED.**

 Some meters are plastic bodied so excessive force during install will break meter and cause leaks.

INSTALLATION STEPS

1. Identify the individually separated water supply lines going to each unit.
2. Turn off water and bleed pressure at a nearby faucet.
3. Cut supply line for each unit with appropriate pipe cutters (PEX, copper, etc).

NOTE: Lay length varies depending on adapters used:

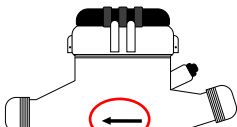
Model	Lay Length
TSN1	2.5" - 3.0"
TSBR	7.5" - 8.0"
TSCA	7.5" - 8.0"

4. Install meters for each unit and check for leaks.

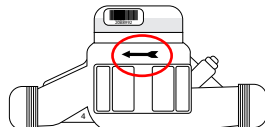
NOTE: Each meter indicates the flow direction. Be sure to install meter in correct orientation.



TSN1



TSBR



TSCA

5. Plug the power adapter into a nearby outlet.

THE METERS ARE READY TO GO!

612-433-2239

**15105 Minnetonka Ind. Rd. STE 222
Minnetonka, MN 55345**

SALES@TRUESUBMETER.COM



TRUE SUBMETER
Water Submetering Solutions